

# HI FIVE

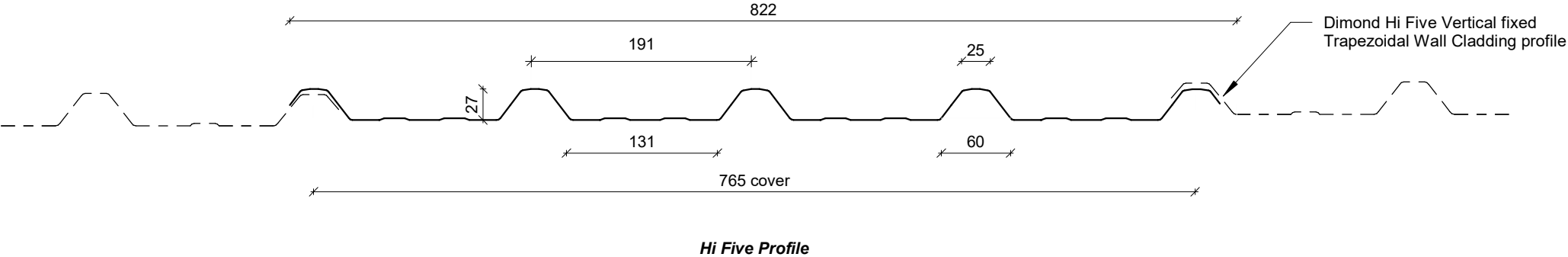
## COMMERCIAL HORIZONTAL WALL CLADDING

**DETAILS:**

**REV:    DATE:**

HFCHC00	Cover Sheet	1	Oct 2025
HFCHC01	Profile Summary	1	Oct 2025
HFCHC02	Typical Flashing Detail	1	Oct 2025
HFCHC03	Barge Detail	1	Oct 2025
HFCHC04	Wall to Roof Transverse Detail	1	Oct 2025
HFCHC05	Wall to Roof Detail	1	Oct 2025
HFCHC06	Box Gutter Detail	1	Oct 2025
HFCHC07	Wall to Roof Apex Detail	1	Oct 2025
HFCHC08	External Corner Detail	1	Oct 2025
HFCHC09	Internal Corner Detail	1	Oct 2025
HFCHC10	Base Detail	1	Oct 2025
HFCHC11	Window / Door Head Detail	1	Oct 2025
HFCHC12	Window / Door Jamb Detail	1	Oct 2025
HFCHC13	Window Sill Detail	1	Oct 2025

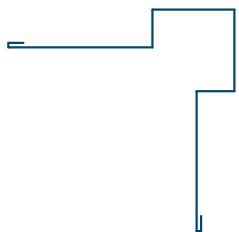
PROFILE OVERVIEW	
RIB TYPE	Low
RIBS PER SHEET	5 Ribs per sheet
WIDTH	765mm Cover, 822mm Sheet



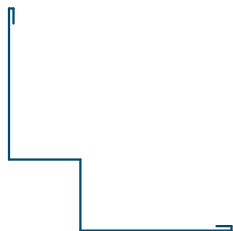
# Profile Summary



©Dimond 2023, all rights reserved. The information and specifications contained in this document are proprietary to Dimond and may not be used other than for the purpose of designing or building a roof or roofing system solely using products supplied or approved by Dimond ("Permitted Purpose"). You may copy this document solely for the Permitted Purpose, but may not otherwise copy, publish, distribute or modify this document without Dimond's prior written consent. Dimond will not be liable for any use of this document or information and specifications contained in this document, other than for the Permitted Purpose



**External Corner Flashing**



**Internal Corner Flashing**



**Base Flashing**



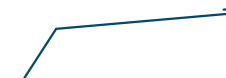
**Window Sill Flashing**



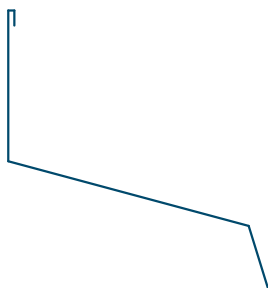
**Window Head Flashing**



**Window Jamb Flashing**



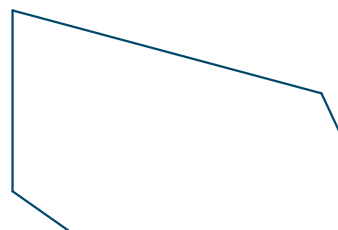
**Eaves Flashing**



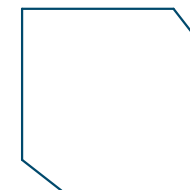
**Wall to Roof Flashing 1**



**Wall to Roof Flashing 2**



**Wall Roof to Wall Apex Flashing**



**Barge Flashing**

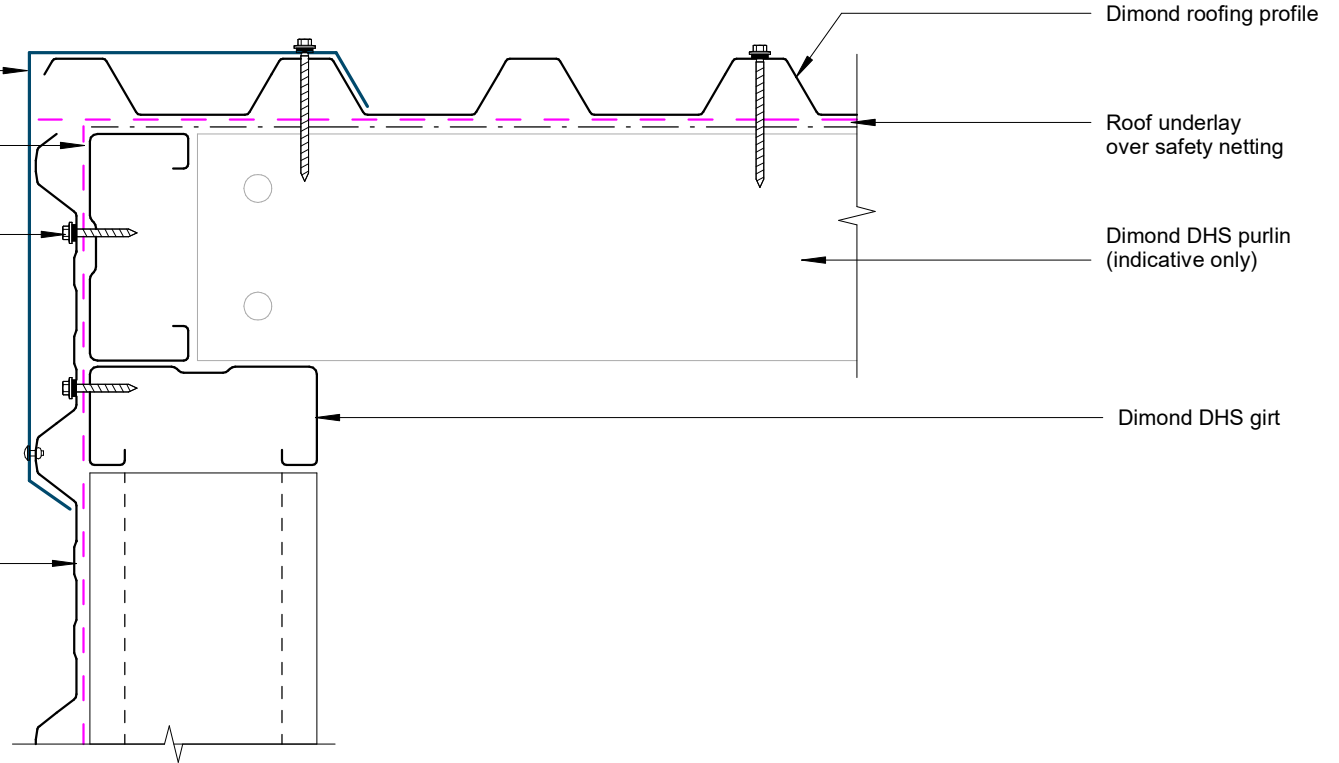
## Typical Flashing Detail

Barge flashing to match roofing.  
Materials & Fixings as per Dimond  
Technical Data & MRM Code of Practice

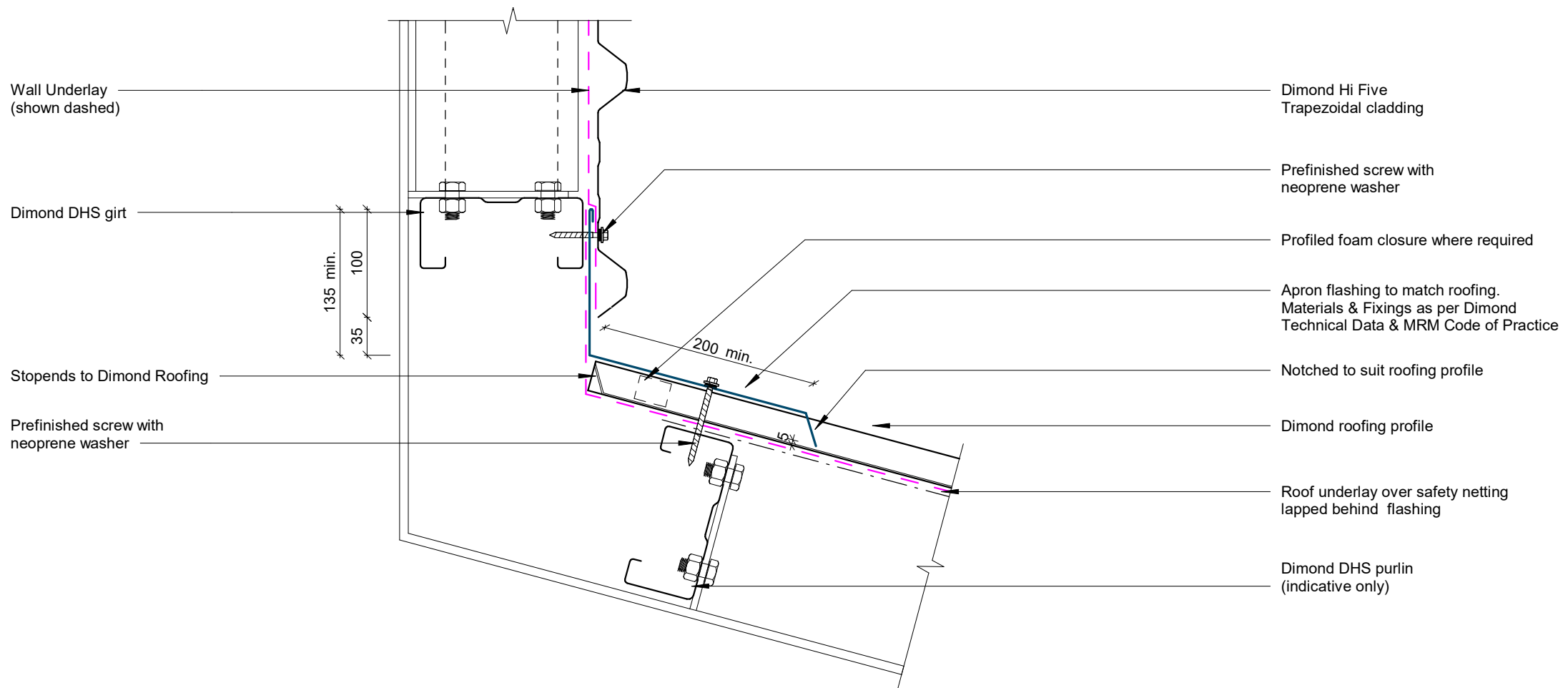
Wall Underlay  
(shown dashed)

Prefinished screw with  
neoprene washer

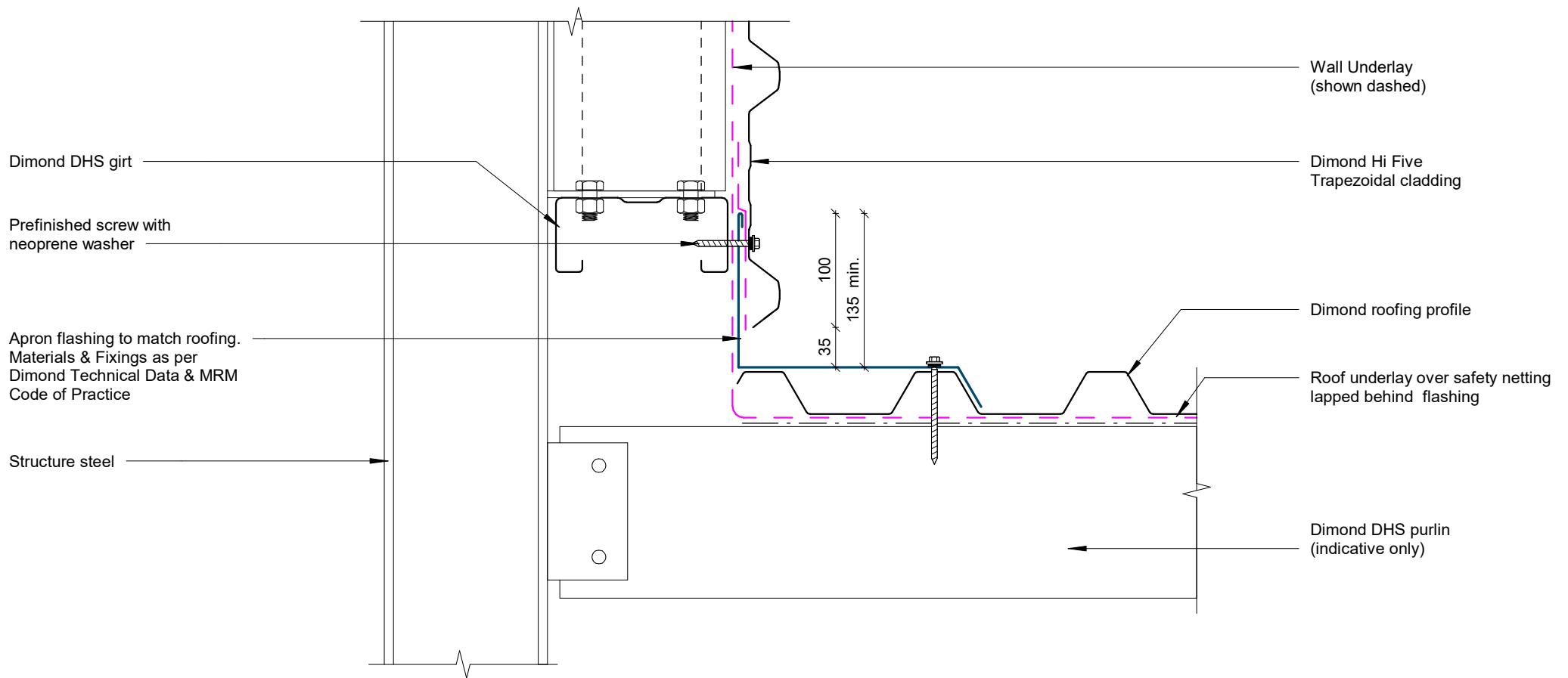
Dimond Hi Five  
Trapezoidal cladding



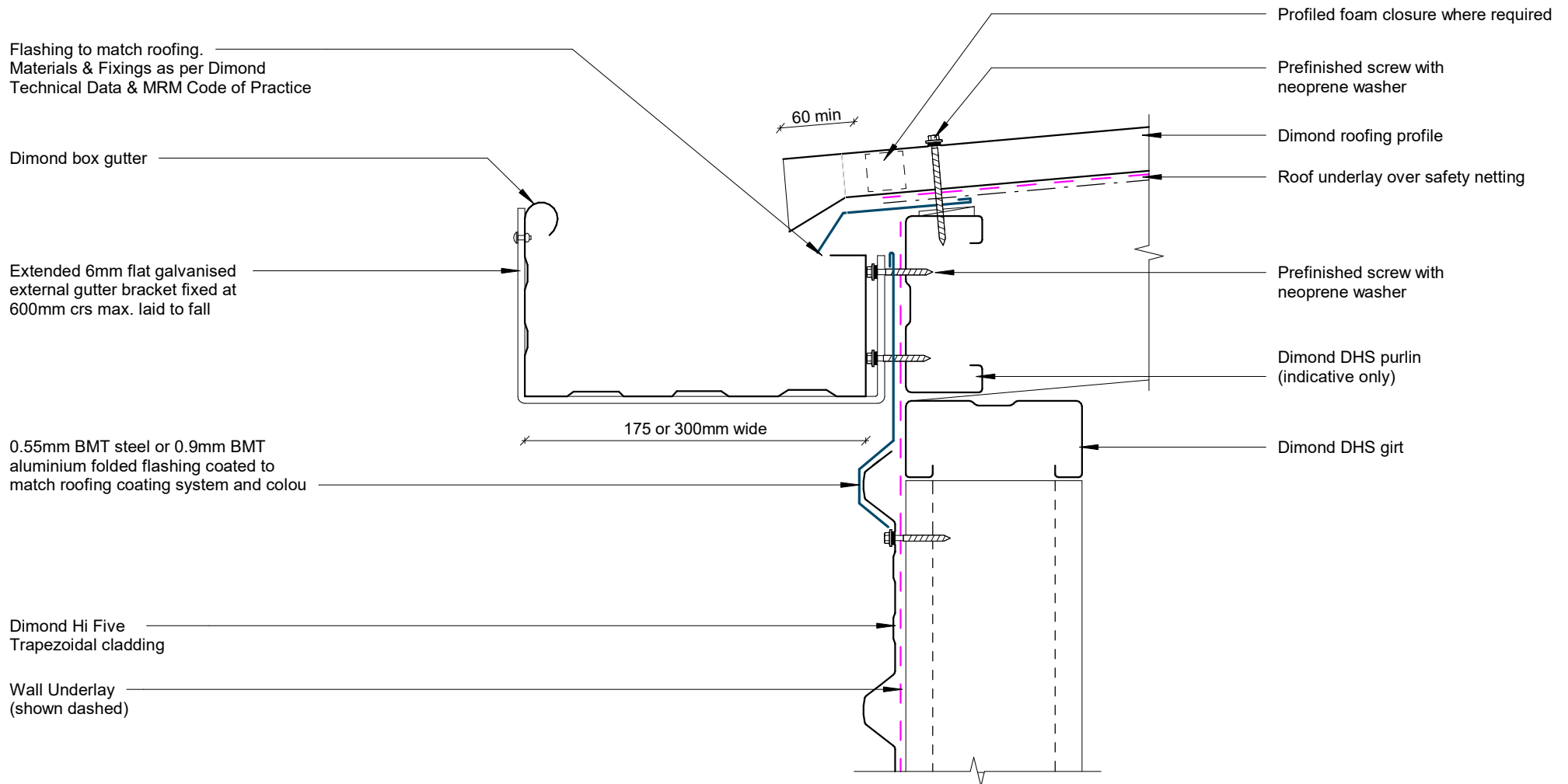
## Barge Detail



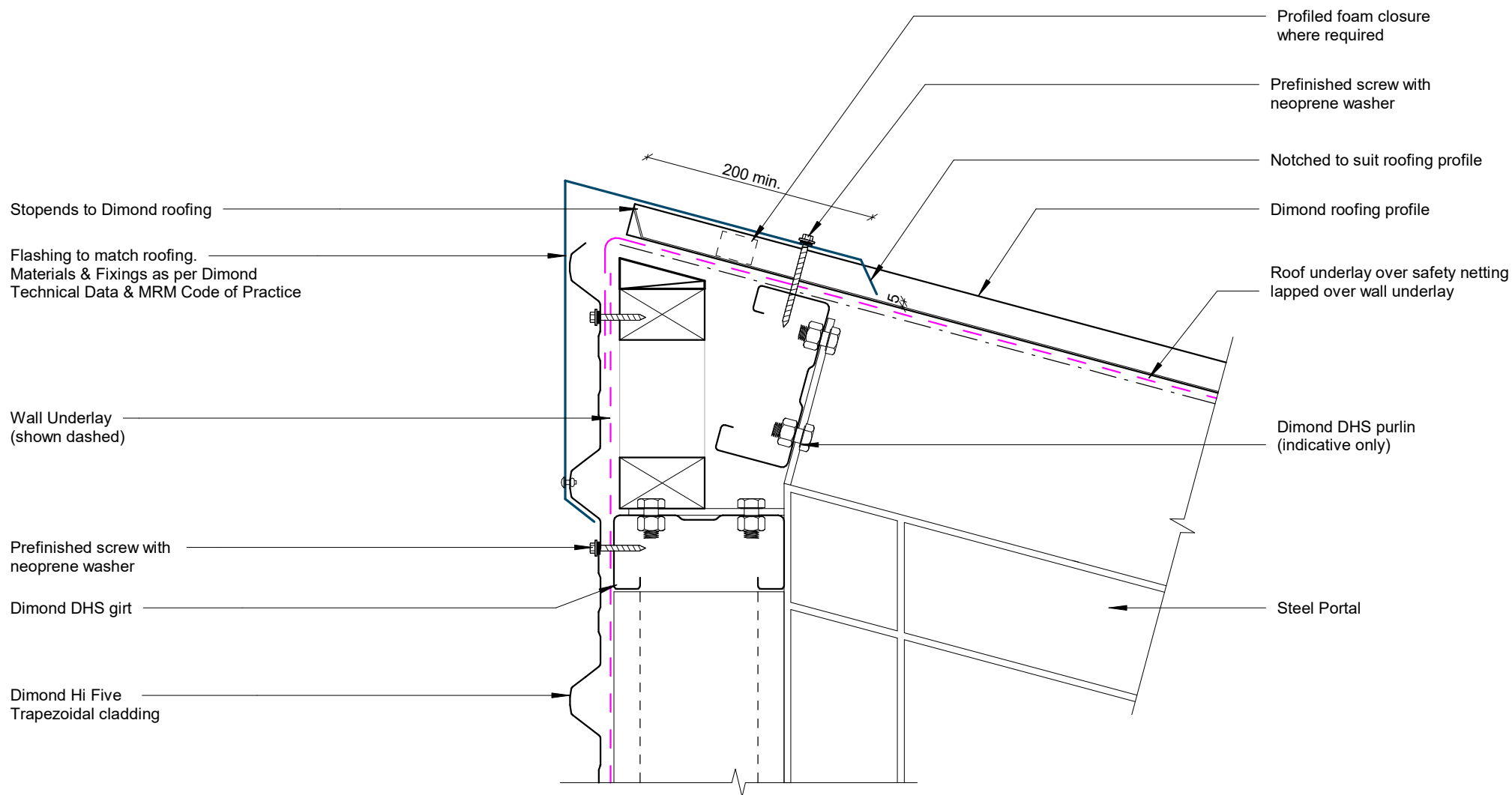
## Wall to Roof Transverse Detail



## Wall to Roof Detail



## Box Gutter Detail

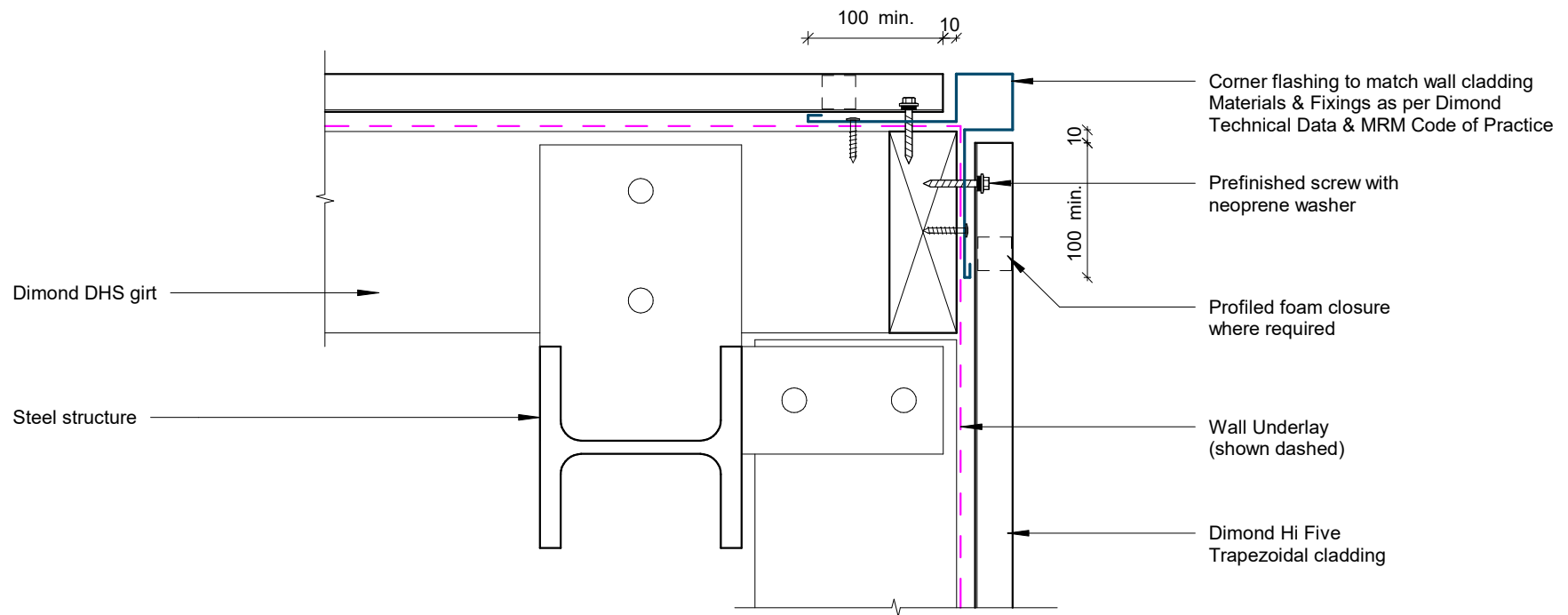


## Wall to Roof Apex Detail

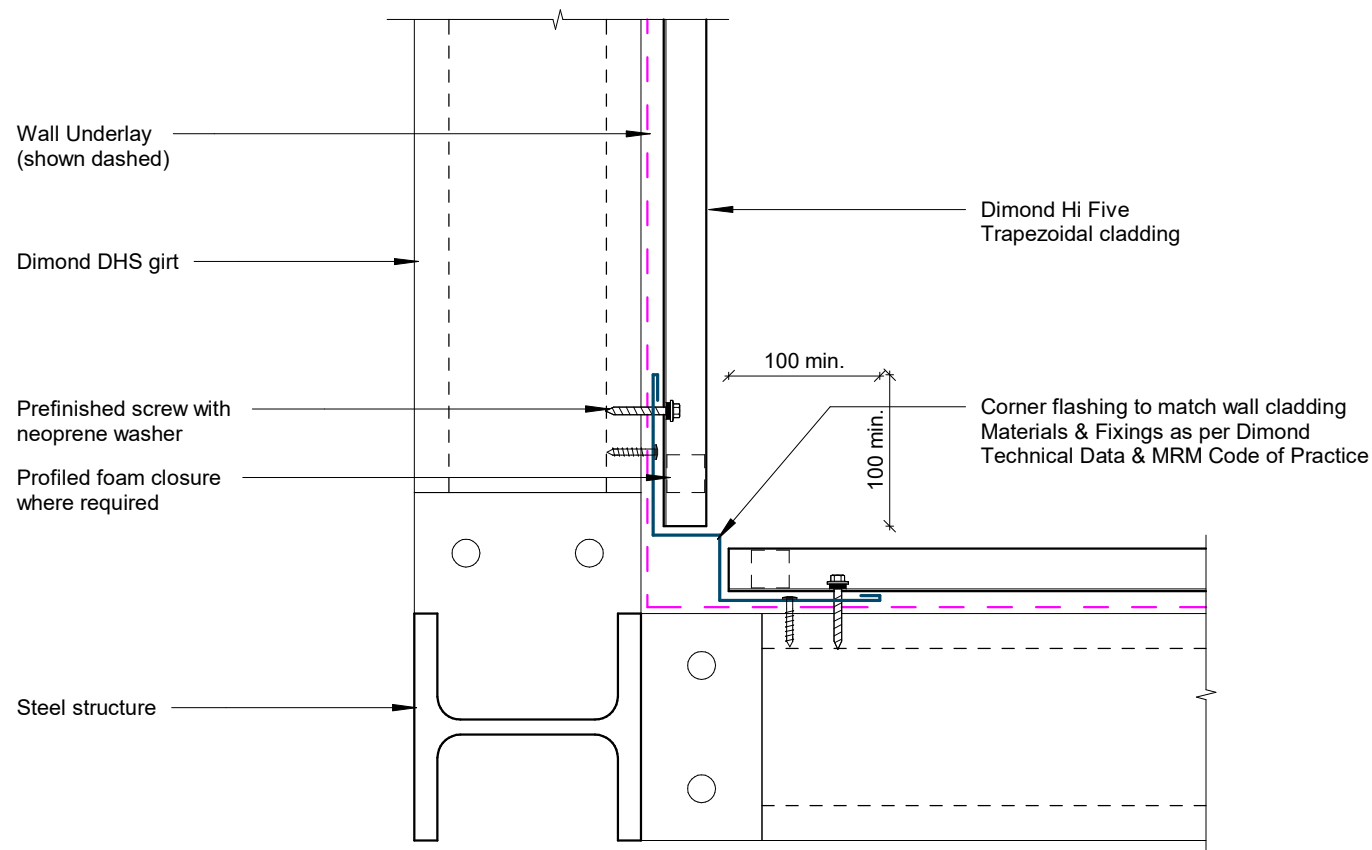
Rev: 1

Hi Five Commercial Horizontal Cladding





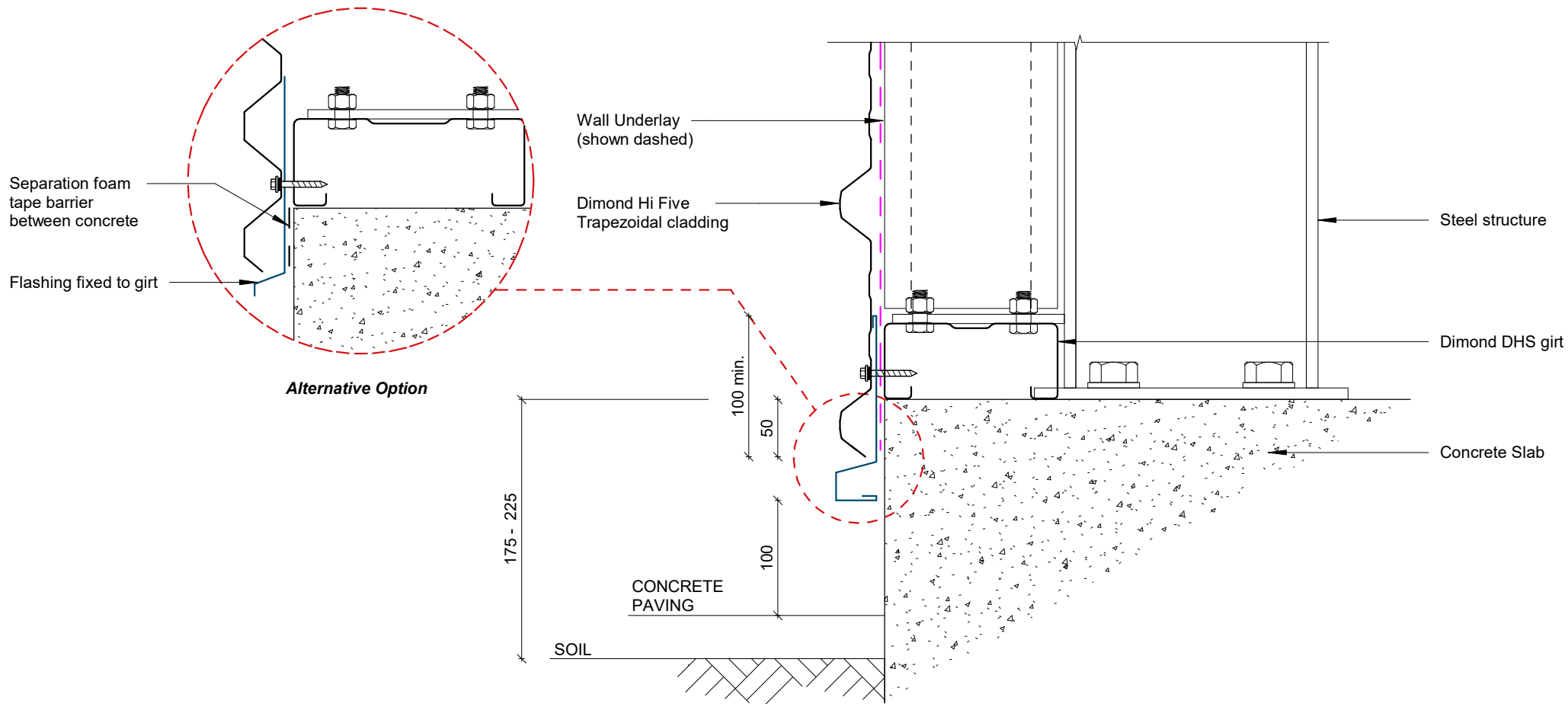
## External Corner Detail



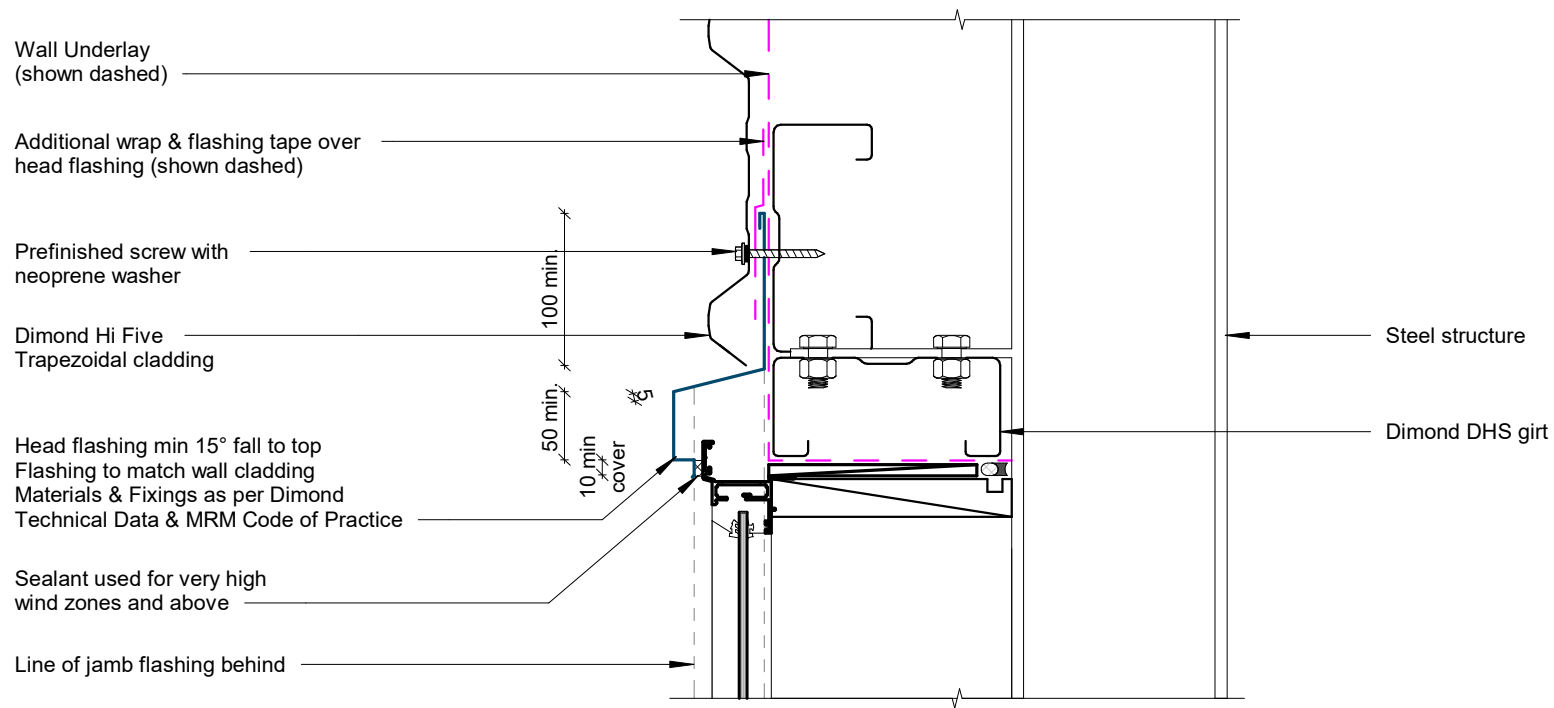
## Internal Corner Detail

Rev: 1

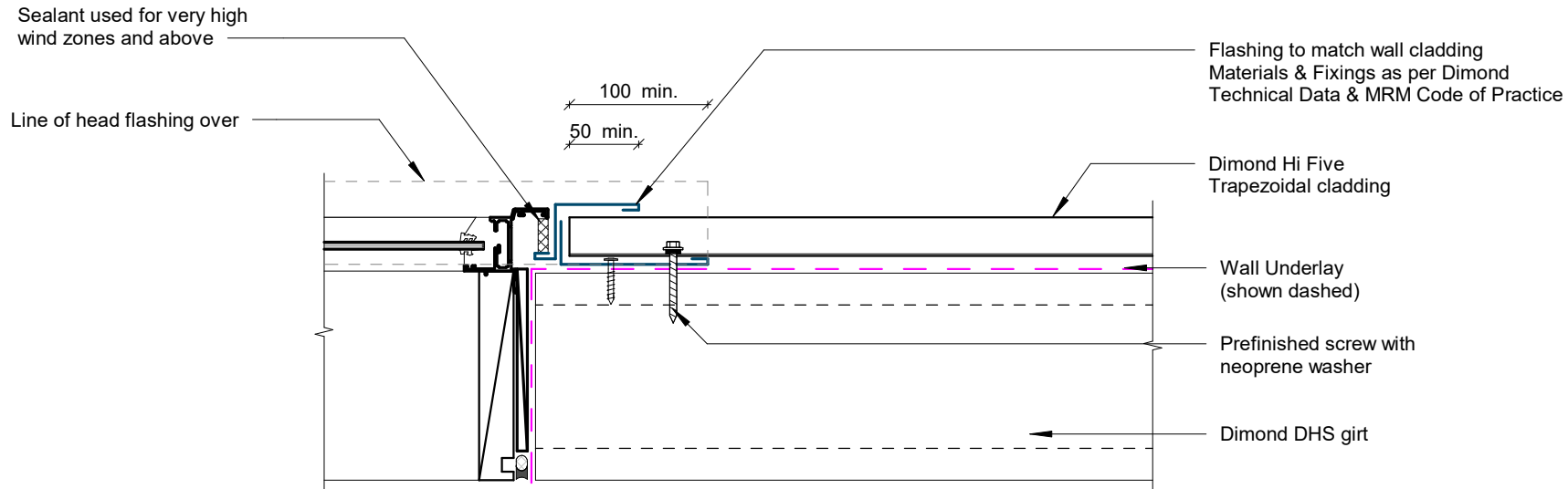
Hi Five Commercial Horizontal Cladding



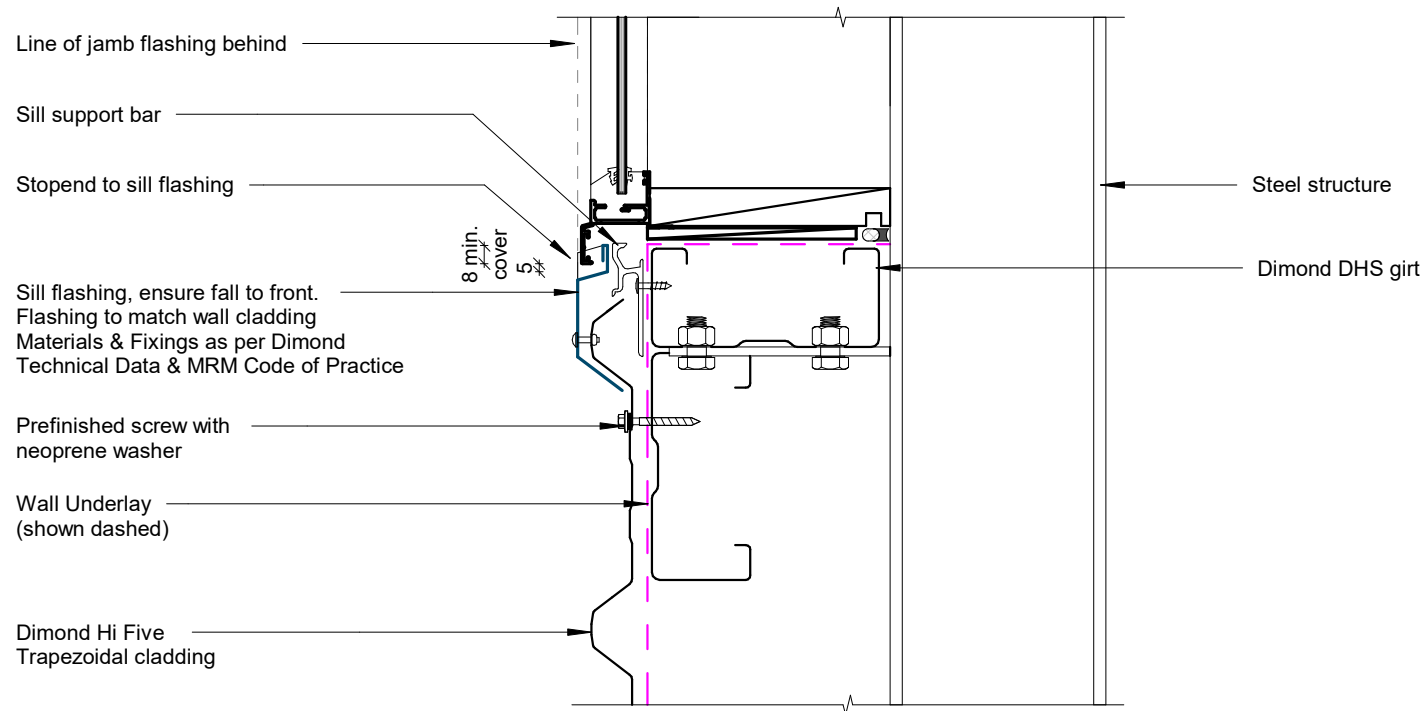
## Base Detail



## Window / Door Head Detail



## Window / Door Jamb Detail



## Window Sill Detail